

# Zhejiang University

Zhejiang University (ZJU) is one of China's top higher education institutions, as well as one of its oldest; its roots can be traced back to 1897 and the founding of the Qiushi Academy.

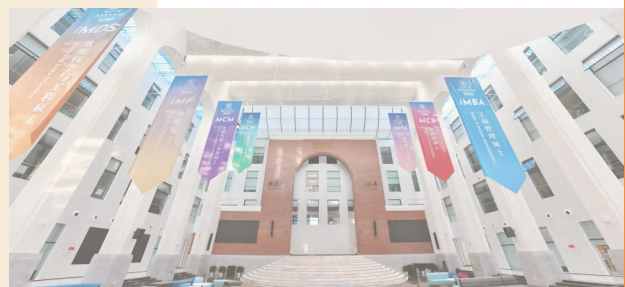
Located in Hangzhou – one of China's most picturesque cities – the University is organized across seven faculties and 37 schools. It is home to 4,191 full-time faculty members, including 52 members of the Chinese Academy of Sciences and the Chinese Academy of Engineering. ZJU has 60,739 full-time students, over 56% of whom are postgraduate students.



**# 3**  
National Ranking 2023

**# 6**  
Asia University Ranking 2023

**# 42**  
QS World University Ranking 2023



## ZHEJIANG UNIVERSITY INTERNATIONAL BUSINESS SCHOOL (ZIBS)

Based in China with global ambition, **ZIBS** aims to build a science & technology-focused premier global business school from China, by upholding the 5“i” philosophy of being “international, interdisciplinary, innovative, inclusive and integrative”, with continued emphases on 3 strategic pillars - Globalization, Digitalization, and the ZIBS Ecosystem.

**ZIBS** offers six postgraduate programs, namely Master of China Studies (MCS), Master in Communication and Management (MCM), international Master of Business Administration (iMBA), international Master of Finance (iMF), international Master of Fine Arts (iMFA) and international Master of Data Science (iMDS), one undergraduate program in Global Communication and Management (GCM) for international students, as well as executive education programs and customized training programs.

Connecting the World · Shaping the Future  
改变世界 引领未来

## PROGRAM OVERVIEW

international Master of Data Science (iMDS)

The iMDS program under the guidance of Center for Data Science, Zhejiang University (CDS) equips students with theory and practical skills in Big Data, focusing on technological innovation in big data collection, clarity, storage, mining, analysis and visualization algorithms. Mentors of this program graduated from world-class universities like University of Pennsylvania and National University of Singapore.

### CENTER FOR DATA SCIENCE (CDS)

Cultivation by Professionals

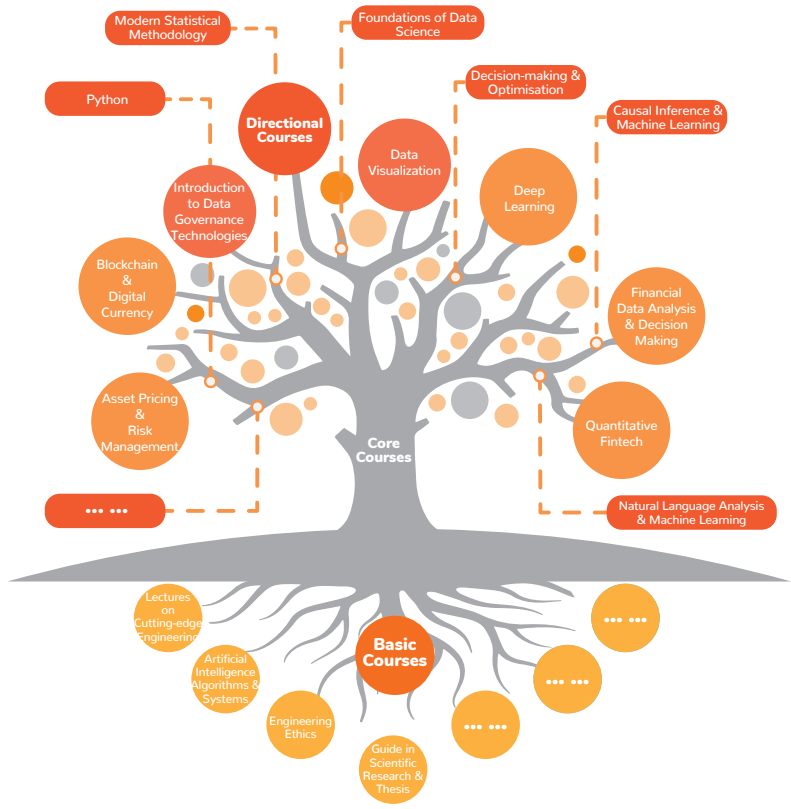
Set up in May 18, 2017, CDS is a university-level academic institution with applied mathematics in statistics, computer science and management as its core disciplines, focusing on big data theory, application and talent training.

### ZHEJIANG UNIVERSITY INTERNATIONAL BUSINESS SCHOOL (ZIBS)

Operation and Student Management

ZIBS implements a multi-institutional, multi-disciplinary and multi-level partnership strategy with Zhejiang University as the core, focusing on business research and talent training in the fields of new finance, new retail, new technology, new industries and new markets.

## CURRICULUM



- ▶ ... More courses will be added
- ▶ Courses indicated above may subject to change

## international Master of Data Science

数据科学与工程专业硕士项目

# PROGRAM HIGHLIGHTS

## Interdisciplinary Pedagogy

In iMDS program, students can acquire the technical and analytical skills that will propel them into careers across diverse industries, from the sciences to finance and more. This program provides broad and unique educational experience across various areas of Data Science.

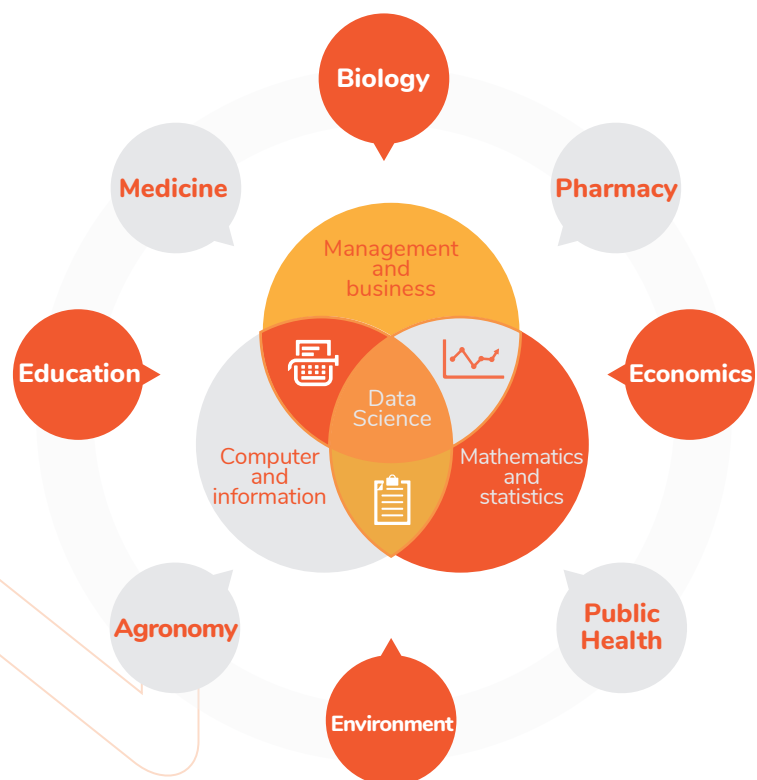
## Multicultural Studying Environment

In the iMDS program, both Chinese and foreign students are taught with English as the teaching language and learn collaboratively within a single class. This program prepares its students with 'global competence' – the capability to learn, work and live with others from different cultural backgrounds.

## Beyond the Courses

Students may participate in a wide range of industrial internships, research work. We partner with famous company such as Ant group, etc. We also invite well-known experts, scholars and enterprise leaders around the world to participate in lecturing, practice and research, which could expand students' international perspective.

# PROGRAM STRUCTURE



45% Course related to Statistics

35% Course related to Computer, Big Data

20% Course related to Management

# APPLICATION

## Requirements

• Applicants must be non-Chinese  
Minimum bachelor's degree

• Applicants with relevant STEM background are strongly encouraged to apply (e.g. Applied Mathematics, Operations Research, Statistics, Industrial Engineering, Computer Science, Data Science and etc.).

• Applicants must have an internet-based TOEFL test score 80 (or above) or IELTS test score 6.5 (or above) or other proof which can reflect the applicants' English proficiency (except for English native speakers, or those who obtained their bachelors' degree in English-taught programs)

## FEES

### APPLICATION FEE >

800 RMB (Non-refundable)

### TUITION >

36,800 RMB/Academic year

### ACCOMMODATION >

8,000-10,000 RMB/Academic year

### INSURANCE >

800 RMB/Year

\* Tuition fee is subject to change according to the latest regulation

# Timeline

1 November, 2023 – February 29, 2024  
Early Action Application

2 May 31, 2024  
Final Deadline for Applications

3 November 2023 – May 2024  
Interview Stage

4 July, 2024  
Official Offer Package (including the JW201/2 Form for a student visa)

5 September, 2024  
Enrollment

\*Note: The assessment result is usually released by email within 4-8 weeks after the interview.

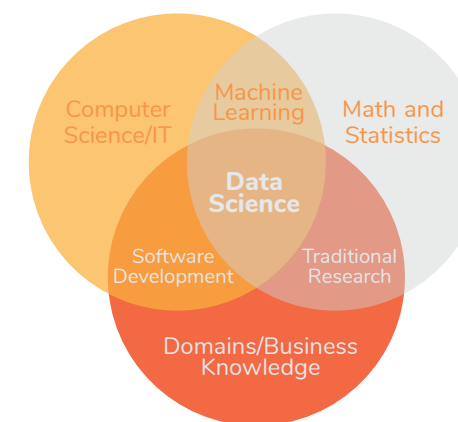
Application Submission: via application system (<http://isinfosys.zju.edu.cn/recruit/login.shtml>)

# COMMUNICATION

International Academic Activities

Exchange

Study Abroad



# CAREER

Big Data Analyst (R&D category)

Data Scientist (Application)

Big Data Engineer (Analytics)

international  
interdisciplinary  
integrative  
inclusive  
innovative

## CONTACT

Telephone: +86 (0571) 87572639

Email: [zibs-imds@intl.zju.edu.cn](mailto:zibs-imds@intl.zju.edu.cn)  
[zibsadmissions@intl.zju.edu.cn](mailto:zibsadmissions@intl.zju.edu.cn)

Website: <https://zibs.zju.edu.cn/eng>

